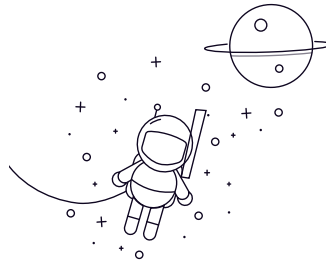


## Square Bore And Cylindrical O.D



select	Inquiry	Bearing Designation	Dimension [mm]				Basic load ratings (kN) Cr	Weight (Kg)
			d	D	Bi	Be		
GW211PP3	1-1/2	100	1.311	1.311	39100	1.27		
W208PP5	1-1/8	80	1.437	0.709	26200	0.68		
W208PP6	1-1/8	80	1.437	0.709	26200	0.73		
W208PP8	1-1/8	80	1.437	1.189	26200	0.75		
W210PP4	1-1/8	90	1.189	1.189	31500	0.87		
W211PP3	1-1/2	100	1.311	1.311	39100	1.27		
W211PP5	1-1/2	101.6	1.75	1.437	39100	1.8		