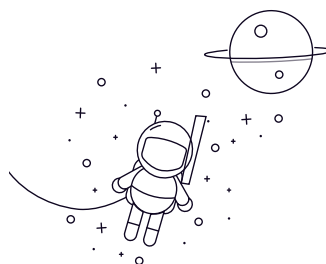


## 7900AC Series



select	Inquiry	Bearing No.	Boundary dimensions □mm□			Basic load ratings(kN)		Limiting speed(rpm )		Mass Kg
			d	D	B	Dynamic(Cr)	Static(Cor)	Grease	Oil	
7901AC	12	24	6	3.2	1.7	28000	36000	0.011		
7902AC	15	28	7	4.5	2.5	24000	32000	0.015		
7903AC	17	30	7	4.8	2.7	22000	30000	0.017		
7904AC	20	37	9	6.4	4	20000	28000	0.035		
7905AC	25	42	9	7.5	5.2	18000	26000	0.042		
7906AC	30	47	9	7.9	6	16000	24000	0.048		
7907AC	35	55	10	11.7	8.8	14000	22000	0.075		
7908AC	40	62	12	14.1	10.1	12000	20000	0.11		
7909AC	45	68	12	15.4	12.2	10000	18000	0.13		
7910AC	50	72	12	16.1	14.8	8000	16000	0.14		
7911AC	55	80	13	18.7	17.5	7500	15000	0.183		
7912AC	60	85	13	19	18	7000	14000	0.198		
7913AC	65	90	13	19.4	20	6500	13000	0.212		
7914AC	70	100	16	27.1	26.3	6300	12000	0.342		
7915AC	75	105	16	27	27.7	6000	10000	0.36		
7916AC	80	116	16	27.5	29	5500	10000	0.381		
7917AC	85	120	18	38	39.1	5000	9000	0.542		
7918AC	90	125	18	39.8	44.5	5000	8500	0.56		
7919AC	95	130	18	40	45.5	4500	8500	0.604		
7920AC	100	140	20	46.4	50	4300	8200	0.808		

7900AC Series

7921AC	105	145	20	47	55.2	4000	8000	0.83
7922AC	110	150	20	49.7	55.3	3800	7500	0.88
7924AC	120	165	22	68.4	77.6	3600	7200	1.15
7926AC	130	180	24	73.4	88.1	3400	7000	1.54
7928AC	140	190	24	74.5	90.2	3200	6800	1.64
7930AC	150	210	28	95.6	117.2	3000	6500	2.97
7932AC	160	220	28	135.4	158.6	2800	6300	3.12